

Fugenthemen

aus dem Improvisationsunterricht bzw. aus Improvisationsprüfungen am Pariser Conservatoire, entnommen aus Unterrichtsmaterial von Daniel Roth im Rahmen seiner kurzzeitig bestehenden Saarbrücker Orgelklasse. Es handelt sich um Fotokopien von vier Seiten aus einem kleinen Querformat-Notizheft (10 Notenzeilen pro Seite). Der G-Schlüssel kommt gar nicht vor; die diversen C-Schlüssel habe ich in diesen umgewandelt. Einige Themen nutzen den F-Schlüssel. Die Nummerierung ist nicht original. KBK

10 numbered musical staves, each containing a fugue theme. The staves are numbered 1 through 10. The notation includes various musical symbols such as clefs, key signatures, time signatures, and note values.



1. Treble clef, key signature of two sharps (F# and C#), 4/4 time signature. The theme starts with a quarter rest, followed by a series of eighth and quarter notes, ending with a half note.

2. Treble clef, key signature of one flat (Bb), 4/4 time signature. The theme starts with a quarter rest, followed by a series of eighth and quarter notes, ending with a half note.

3. Treble clef, key signature of two flats (Bb and Eb), 4/4 time signature. The theme starts with a quarter rest, followed by a series of eighth and quarter notes, ending with a half note.

4. Bass clef, key signature of two flats (Bb and Eb), 4/4 time signature. The theme starts with a quarter rest, followed by a series of eighth and quarter notes, ending with a half note.

5. Treble clef, key signature of three sharps (F#, C#, and G#), 4/4 time signature. The theme starts with a quarter rest, followed by a series of eighth and quarter notes, ending with a half note.

6. Treble clef, key signature of one flat (Bb), 4/4 time signature. The theme starts with a quarter rest, followed by a series of eighth and quarter notes, ending with a half note.

7. Treble clef, key signature of one flat (Bb), 4/4 time signature. The theme starts with a quarter rest, followed by a series of eighth and quarter notes, ending with a half note.

8. Treble clef, key signature of one flat (Bb), 4/4 time signature. The theme starts with a quarter rest, followed by a series of eighth and quarter notes, ending with a half note.

9. Treble clef, key signature of two sharps (F# and C#), 4/4 time signature. The theme starts with a quarter rest, followed by a series of eighth and quarter notes, ending with a half note.

10. Bass clef, key signature of one flat (Bb), 4/4 time signature. The theme starts with a quarter rest, followed by a series of eighth and quarter notes, ending with a half note.

11



12



13



14



15



16



17



18



19



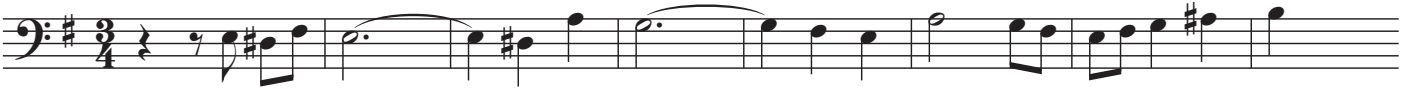
20



21



22



(NB: Hier wurde auf der Vorlage (vom selben Schreiber?) ein zweites Thema im doppelten Kontrapunkt hinzugefügt):

23



24



25



26



27



28



29



30



31



32



33

